

## GROUP SHIRT ORDER FORM:

Date of Order: \_\_\_\_\_

SHIRT DETAILS Color: \_\_\_\_\_

ORGANIZATION: \_\_\_\_\_

TOTAL NUMBER PER SIZE: Including free shirts:

Group Name or Number: \_\_\_\_\_

1.  Tshirt (14 - XXL)  
14 \_\_\_ 16:\_\_\_ S:\_\_\_ M:\_\_\_ L:\_\_\_ XL:\_\_\_ XXL:\_\_\_

Person ordering: \_\_\_\_\_

2.  Hooded sweatshirt(S - XXL)  
S:\_\_\_ M:\_\_\_ L:\_\_\_ XL:\_\_\_ XXL:\_\_\_

Mobile Phone: \_\_\_\_\_

3.  Other: \_\_\_\_\_ (S - XXL)  
S:\_\_\_ M:\_\_\_ L:\_\_\_ XL:\_\_\_ XXL:\_\_\_

Email: \_\_\_\_\_

2nd Mobile phone: \_\_\_\_\_

WE MUST HAVE 2 ISRAELI MOBILE PHONE NUMBERS

DELIVERY: \_\_\_\_\_ Date: \_\_\_\_\_

SHIRTS ORDERED - TOTAL:

Place: \_\_\_\_\_

NUMBER OF FREE SHIRTS:

1 free with every 11 ordered.

DELIVERIES ARE ONLY IN THE EVENING

SHIRTS TO BE PAID FOR:

FOR FURTHER DETAILS PHONE:

Office Hours (08:00-17:00): 04-8666010 #103/104

Email for graphics and orders: orders@tmax.co.il

After office hours: Maxie 052-2898575

PRICE PER SHIRT:

TOTAL:

TOTAL TO BE PAID:

	1	2	3
SHIRTS ORDERED - TOTAL:			
NUMBER OF FREE SHIRTS:			
SHIRTS TO BE PAID FOR:			
PRICE PER SHIRT:			
TOTAL:			
TOTAL TO BE PAID:			

PLEASE PHONE AND CONFIRM THAT WE RECEIVED YOUR ORDER

DESIGN DETAILS FRONT: Pocket size

BACK: BRIEF DESCRIPTION/SKETCH

FOR BIRTHRIGHT GROUPS THE BIRTHRIGHT  
LOGO IS MANDATORY ON THE FRONT

### Order and graphics instructions.

To send your graphics:

Please make sure the graphics is drawn with a black pen on clean white paper.

Photograph the document using CamScanner, a free app. Please do this using a even light source. Is is best to photograph in bright shade and directly above the document (not at a angle). Save it as a Black and White image.

Email it as a PDF file (you can do the same with the order fdorm) to: orders@tmax.co.il

If you are sending graphics done on a computer please note that:

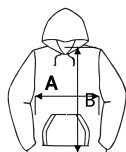
We work only with pdf/psd/AI/cdr/EPS and TIFF files. A jpf will work only with a one color design.

We need graphics 1:1 at a minimum of 200dpi. Please convert fonts to curves.

We cannot work with Word or Powerpoint file.

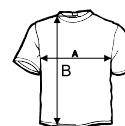
### SIZE CHART:

HOODED  
SWEATSHIRT



+5%	size S	size M	size L	size XL	size XXL
A	50	54	58	60	62
B	66	67	69	72	72

T SHIRT



+5%	size S	size M	size L	size XL	size XXL
A	52	54	55	58	62
B	69	71	73	76	79

Our sizes are based on European sizes which are different to American sizes, please check the size chart.